



fischer light channel system FLS

Easy, stable and variable.



fischer light channel system FLS.

Easy and stable.

Installation channel FLS

The alternating long slots with 8,5 mm and 10,5 mm width in the channel **enable the optimised fixing in the substrate.**

Unique channel width of 31 mm.

The serration with stamped teeth in the channel **facilitates the installation of the connector elements intensively.**

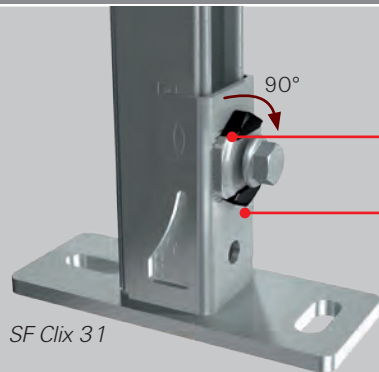
The channel shape with edge seams gives a **perfect fit for the construction elements.**

The wide range of channels with three channel heights (17, 30 and 37 mm) **allows greater flexibility.**

The scale on the channels **simplifies its cutting** and the **positioning of the accessories during the installation.**



Pre-assembled construction elements

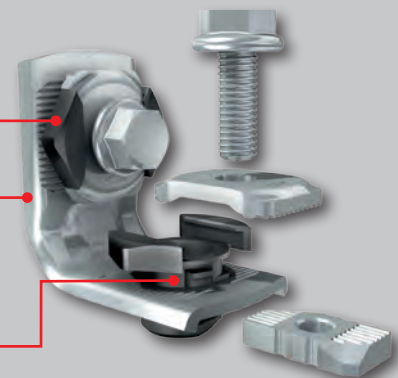


SF Clix 31

The clix-elements with 90°-rotation enable **a simple and time-saving post-installation in set channels.**

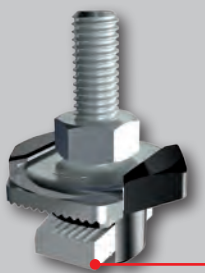
The pre-assembled accessories guarantee a **time-saving and easy installation** due to the reduced number of articles.

The unique thrust block **guarantees a secure installation position.**



MW Clix 90°

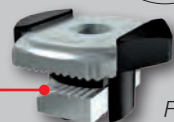
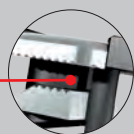
Optimised connection elements



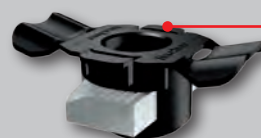
FHS Clix

The special spring leg on the clix-elements ensures the required pressure in the channel for **a simple adjustment of the element.**

The unique stop element on the clix-elements **facilitates the precise and error-free 90°-rotation in the channel.**



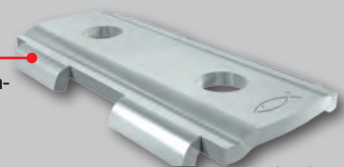
FSM Clix M



FSM Clix P

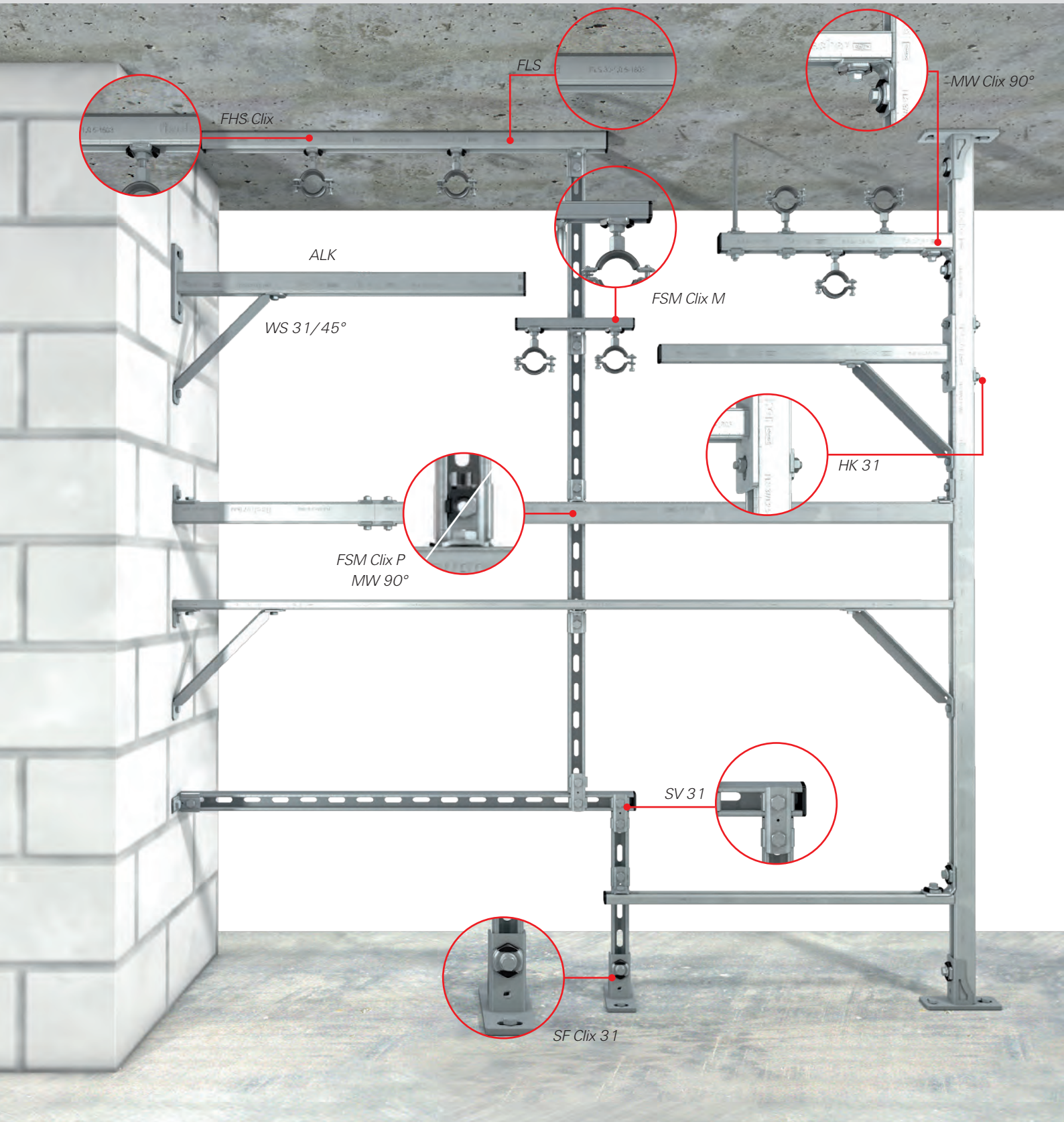
The unique and disappearing thrust block on the plastic holder of the sliding nut Clix P guarantees a **connection without plastic insert in order for a secure metallic connection.**

The characteristic retaining brackets on the connector elements guarantee the **form-fitting installation in the channel.**



SV 31

The variable channel system. Flexibility in the system.



Applications.

Channel fastening on the floor



SF Clix 31 Saddle flange

- Time-saving and secure installation with the preassembled SF Clix 31.

Channel construction as bracket



MW 90° Clix Angle bracket

- The unique thrust block on the MW 90° Clix guarantees a secure installation position.

Ventilation duct fastening with suspended channel



FLS light channel, EM31 rubber inlay

- Easy and secure installation through optimum stability of the light channels and acoustic decoupling of the EMS rubber inlay.

Channel extension with rail connector



FSM Clix P Sliding channel nut

- Secure metal connection due to the disappearing thrust block on the sliding nut FSM Clix P.

Rack with two levels



SV 31 Channel connector

- Form-fitting installation longitudinal and transverse to the channel direction due to the characteristic retaining brackets of the channel connector SV 31.

Light, suspended pipe fastening



FSM Clix M Sliding channel nut

- Easy adjustment of the suspension position in the channel with the FSM Clix M through the characteristic spring leg.

Cantilever arm fitted on channel



HK 31 Channel washer

- Flexible and stable channel connection, also on the reverse, as a result of the unique retaining brackets on the channel connectors.

Pipe fastening on light channel



FHS Clix T-head bolt

- Precise and error-free 90° rotation on the clix-elements through the special stop element.

Ventilation pipe fastening to the wall



WS 31/45° Angle brace

- Stable and secure cantilever arm fastening through the angle brace WS 31/45°.

Cable duct on cantilever arm



ALK Cantilever arm

- Easy and load-optimised cantilever arm fastening through various cantilever arms ALK.



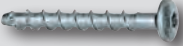
Range and loads.



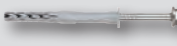
	Item	Art.-No.	Sales unit [pcs.]
	Channel FLS 17/1.0 - 2 m	538753	10
	Channel FLS 17/1.0 - 3 m	538754	8
	Channel FLS 30/1.0 - 2 m	538755	10
	Channel FLS 30/1.0 - 3 m	538756	8
	Channel FLS 37/1.2 - 2 m	538757	10
	Channel FLS 37/1.2 - 3 m	538758	8
	Channel FLS 37/1.2 - 6 m	538759	1
	Cover cap AK 17	538746	100
	Cover cap AK 30	538747	100
	Cover cap AK 37	538748	100
	Channel connector SV 31	538641	25
	Sliding channel nut FSM Clix P 6	538643	50
	Sliding channel nut FSM Clix P 8	538647	50
	Sliding channel nut FSM Clix P 10	538649	50
	Sliding channel nut FSM Clix M 6	538650	50
	Sliding channel nut FSM Clix M 8	538651	50
	Sliding channel nut FSM Clix M 10	538652	50
	Saddle flange pre-assembled SF Clix 31	538665	10
	Angle bracket pre-assembled MW Clix 90°	538666	10
	Beam clamp TKR 31	538751	25

	Item	Art.-No.	Sales unit [pcs.]
	Cantilever arm ALK 17-200	538738	10
	Cantilever arm ALK 17-300	538739	10
	Cantilever arm ALK 30-200	538740	10
	Cantilever arm ALK 30-300	538741	10
	Cantilever arm ALK 30-450	538742	10
	Cantilever arm ALK 37-300	538743	10
	Cantilever arm ALK 37-450	538744	10
	Cantilever arm ALK 37-600	538745	5
	Angle brace WS 31/45°	538749	10
	Channel washer HK 31 8,5	538663	50
	Channel washer HK 31 10,5	538664	50
	T-head bolt FHS Clix 8 x 30	538653	100
	T-head bolt FHS Clix 8 x 40	538654	100
	T-head bolt FHS Clix 8 x 60	538655	100
	T-head bolt FHS Clix 8 x 80	538656	50
	T-head bolt FHS Clix 8 x 100	538657	50
	T-head bolt FHS Clix 10 x 30	538658	100
	T-head bolt FHS Clix 10 x 40	538659	100
	T-head bolt FHS Clix 10 x 60	538660	50
	T-head bolt FHS Clix 10 x 100	538661	50
	Angle bracket substrate MWU 90° (8,5)	538667	25
	Angle bracket MW 90°	538668	50
	Rubber inlay EMS 31	538752	1

Load table FLS Clix elements (applies to all elements with hammer head plate FHS, FSM, MW and SF)

Type	Max. recommended tension load for FLS17/1.0 and FLS30/1.0 N _{empt} [kN]	Max. recommended tension load for FLS 37/1.2 N _{empt} [kN]	Max. recommended shear load V _{empt} [kN]	Tightening torque T _{inst} [Nm]
FHS Clix / FSM Clix M	1,5	2,0	1,0	8,0
FSM Clix P, HK, MW, MWU, SF, SV	1,5	2,0	1,0	10,0

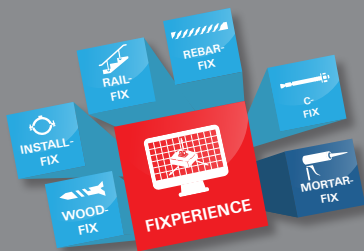
	Item	Art.-No.	Sales Unit [pcs]
	FAZ II 8/10 ¹⁾	94871	50
	FAZ II 10/10 ¹⁾	94981	50
	FBS II 8x55 5/- US TX ¹⁾	536851	50
	FBS II 8x70 20/5 US TX ¹⁾	536852	50
	FBS 6x40/5 LP ¹⁾	523911	100
	FBS 6x80/25 LP ¹⁾	66948	100

	Item	Art.-No.	Sales Unit [pcs]
	FBS 6x35 M8/M10 I	523912	100
	FBS 6x55 M8/M10 I	66950	100
	EA II M8x25 ¹⁾	532231	100
	EA II M10x25 ¹⁾	532232	50
	SXR 10x60 FUS ¹⁾	46329	100

¹⁾ Other dimensions on request.

fischer FIXPERIENCE - INSTALL - FIX.

The design and information software suite.



- The modular design program includes engineering software and application modules.
- The software is based on international design standards (ETAG 001 and EC2, such as EC1, EC3 and EC5), including the national application documents. All common force and measurement units are available.
- Incorrect input will be recognized and the software gives tips to get a correct result. This ensures a safe and reliable design every time.
- The graphical display can easily be rotated through 360°, panned, tilted or zoomed as required.
- The 3D display gives a detailed and realistic image.
- The "live update" feature helps to keep the program up to date ensuring you are always working with the latest version.
- Free download and updates at www.fischer.de/fixperience-en

Our service to you.



We are available to you at any time as a reliable partner to offer technical support and advice:

- Our products range from chemical resin systems to steel anchors through to nylon anchors.
- Competence and innovation through own research, development and production.
- Global presence and active sales service in over 100 countries.
- Qualified technical consulting for economical and compliant fastening solutions. Also on-site at the construction site if requested.
- Training sessions, some with accreditation, at your premises or at the fischer ACADEMY.
- Design and construction software for demanding applications.

This is what fischer stands for.



FIXING SYSTEMS



AUTOMOTIVE SYSTEMS



FISCHERTECHNIK



CONSULTING

See the extensive main catalogue or visit our website at www.fischer.de for information about the complete fischer range